

Portland North Park Blocks



23rd Annual Fine Arts & Crafts Festival

August 31, Sept. 1 (10am-6pm), September 2 (10am-5pm)

Enclosed are the following items:

- Festival Details
- Artist Eligibility/ Artwork Criteria
- Lodging Information
- Supplies & Services Info

We welcome you to this year's festival and wish you success!

-Art In The Pearl Board



Art In The Pearl Festival Details:

Welcome to our 23rd Annual Fine Arts & Crafts Festival!

Labor Day Weekend: August 31, Sept. 1 & 2, 2019

North Park Blocks, Portland, Oregon

Please see the check in map (last page) with the specific time for your assigned booth. Identification is required in order to receive your packet at check in. The information booth is open at 10am. The map will be uploaded to our website and emailed via Zapplication some time in August.

Please have your vehicles away from the park by 9:30 am each morning of the festival. **Remember, no vehicles on the grass!!**

Peter Corvallis tent/table rentals: 503.222.1664.

Purchase electricity on Zapplication by August 15th for the \$80 early bird rate.

Electricity will increase to \$115 on August 16th.

Emergencies: We have an EMT and a cell phone at the information booth for emergencies. The information booth is on the south side of Everett Street, between Park and 8th at the center of the event. Please be aware that this is an active urban environment and keep your valuables protected. The help number: 503.989.7511 (Carol's phone) will be printed on the back of your nametag. Please use this number sparingly as we are working artists. For emergencies dial **911** and then inform the show if possible.

Booth sitting: Artists who do not have partners or friends to provide a break can schedule a booth sitter. Sign up list is at the information booth.

Dogs Are Prohibited: Due to risk and liability concerns, exhibiting artists may not keep dogs in their booths during the festival unless they are service dogs for blind or hearing impaired persons.

Artists Hospitality: Between NW Everett & NW Flanders in the middle of the park.

Art In The Pearl Board Members: Identifiable by the colored banner hanging in the front corner of their booths. Please feel free to talk with any of us if you have questions or suggestions.

Parking: There are two very convenient parking lots right by the show. South lot: Broadway & Couch. North: 9th & Glisan/Park Ave. Or type: North Park Blocks, Portland, Or on www.parkopedia.com.



RULES FOR PARTICIPATION AND CONDITIONS OF ENTRY IN THE ART IN THE PEARL FINE ARTS AND CRAFTS FESTIVAL:

1. All exhibited work must be consistent with the images submitted by Artist and selected by the jury.
2. All exhibited work must be original to and handcrafted by the accepted Artist. Artist guarantees the accuracy of the description of the work presented to the jury and the authenticity of the work as the creation of their own hands.
3. Work done by a production studio is not acceptable. All work must be designed and executed by the accepted Artist.
4. All participating Artists must be present with their work for the entire three days of the Art Festival. All booths and display materials must remain intact during the entire festival. Representatives may not attend in place of the artist. The Organizer reserves the right to close or remove any booth at which the Artist is not noticeably present. Acceptable photo identification is required at check-in to ensure compliance.
5. Artists must be at least 18 years old.
6. Only those Artists accepted in the Jewelry category may exhibit or sell jewelry. All jewelry, regardless of the materials used, must be entered in the Jewelry category.
7. Artists must prominently display an Artist Statement in their booth describing their materials, process and technique.
8. No more than two artists may collaborate on work. Both Artists must be included on the application. Artist collaborators that produce a single product must creatively contribute to each piece.

Art In The Pearl Inc. seeks to present the highest quality fine arts and crafts festival. Consistent enforcement of these rules helps us meet that goal. Members from the Quality Assurance Committee will visit all displays at intervals throughout the Festival. An artist may be asked to remove work. If issues are resolved, the artist may remain in the festival. If the noncompliance remains, the artist may be requested to leave the festival at that time. Such removal may also make the artist ineligible for future participation in Art In The Pearl. If an Artist is asked to leave the show for noncompliance, no booth fee refunds or other compensation will be provided.

RESTRICTIONS: TWO DIMENSIONAL REPRODUCTIONS:

1. Quality, unframed reproductions of two-dimensional originals, signed and numbered by the Artist, are the only acceptable form of sales in addition to the original works. When original art is scanned in or

digitally uploaded into a computer or photographed onto film and then printed as a Giclee/ink jet print, photograph, offset lithograph, photocopy etc., the result is considered a reproduction and not an original work in accordance with Festival rules. Any of the above or any similar method of work that also receives additional modification or enhancement by the Artist are also considered to be Reproductions in accordance with the Festival rules. All reproductions must be clearly and individually labeled "reproduction" on the front of each piece. They must NOT be labeled as "print", "offset lithograph" or "giclee".

******Reproductions on canvas are not acceptable.***

2. Reproductions must be signed, and editions must contain no more than 250 total per image.
3. Reproductions shall be unframed and may not be displayed on any wall space. Only original works may be hung. Reproductions may be displayed only in browse boxes, flip bins or similar displays.
4. At least 85% of Artist's display shall consist of original artwork. Reproductions will be limited to no more than 15% of the total display by any Artist. Reproductions must be consistent with the style and quality of work represented in juried images.
5. Artists may not sell postcards, note cards, calendars, posters, magnets, stationery, works digitally printed on canvas (e.g. giclee on canvas), or tshirts.
6. Photographers are encouraged to do their own printing. Photographs on canvas are not acceptable.



Lodging Information:

Downtown Hotels:

Ace Hotel

1022 SW Stark Street
Portland, Or 97205
503-228-2277
(4 blocks from festival)

The Benson Hotel

309 SW Broadway
Portland, Or 97205
503-228-2000

Embassy Suites Downtown

319 SW Pine Street
Portland, Or 97205
503-279-9000
Each suite has a living room/bedroom
+ breakfast and happy hour.

Hotel deLuxe

729 SW 15th at Yamhill
Portland, Or 97205
503-228-6311

Hotel Lucia

400 SW Broadway
Portland, Or 97205
866-986-8086

Mark Spencer Hotel

409 SW 11th Ave @ Stark Street
Portland, Or 97205
503-224-3293

Hampton Inn (Sponsor Hotel)

354 NW 9th Ave
Portland, Or 97209
503-222-5200
ask for the 2019, 15% Social discount

Residence Inn by Marriott

1150 NW 9th Ave
Portland, Or 97209
503-220-1339

University Place Hotel

310 SW Lincoln Street
Portland, Or 97201
866-845-4647
On site parking accommodates
oversized vehicles/trailers

Northwest Hotels

The Silver Cloud Inn Downtown

2426 NW Vaughn Street
Portland, Or 97210
503-242-2400

Holiday Inn Express

2333 NW Vaughn Street
Portland, Or 97210
503-484-1100

Inn at Northrup Station

2025 NW Northrup
Portland, Or 97209
503-224-0543

Northeast Hotels

DoubleTree Hotel

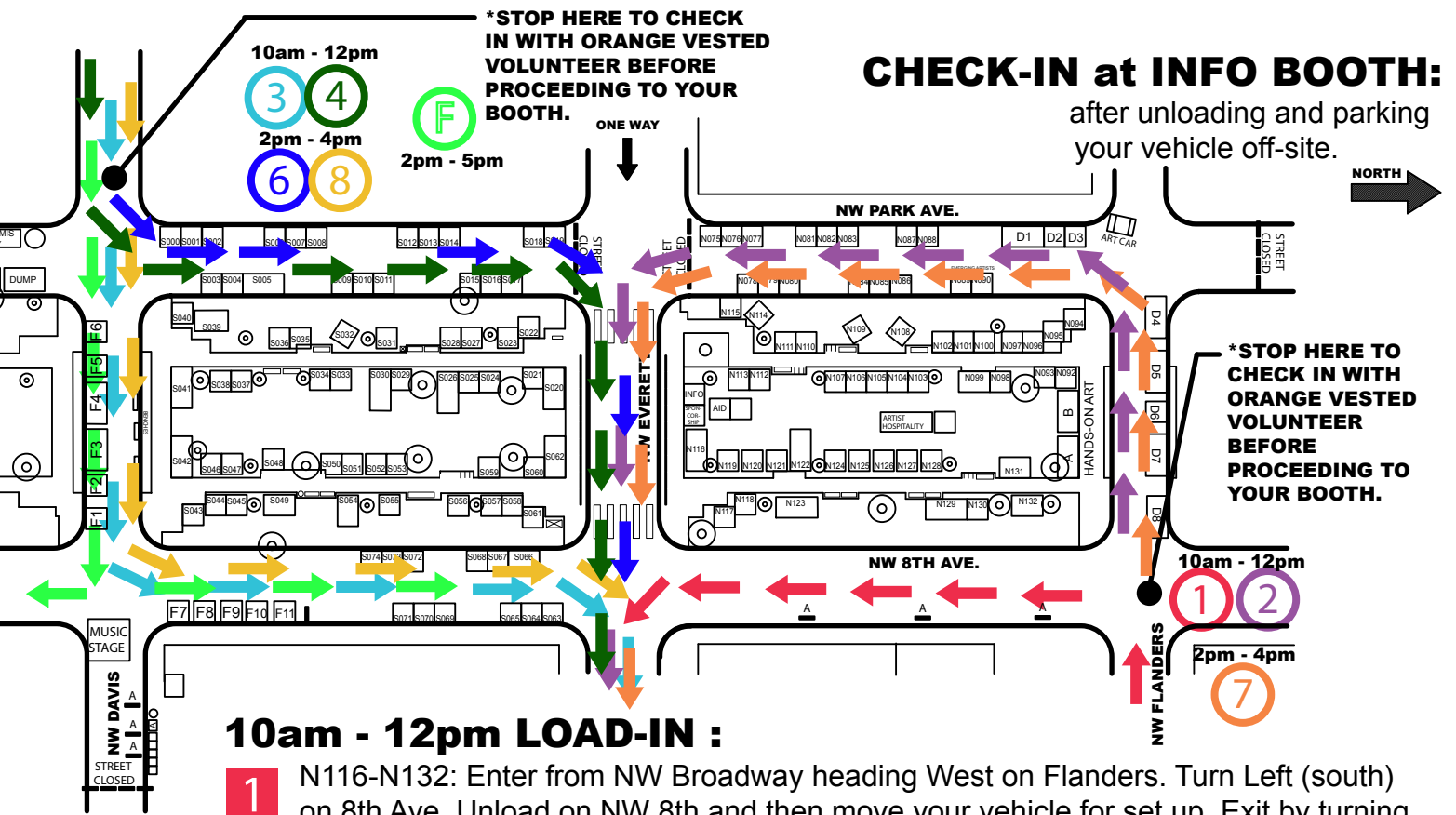
1000 NE Multnomah St.
Portland, Or 97232
503-281-6111

Supplies & Services



Vendor	Address	Telephone
Art Supplies		
Dick Blick	1115 NW Glisan	503.223.3724
Columbia Art & Drafting	1515 E. Burnside	503.232.2216
Frame Central	1238 NW Davis	503.546.9087
Lara Sydney Framing	1230 NW Hoyt	503.223.4923
Banks/ATMS		
Albina Community Bank	430 NW 10th Ave	503.445.2150
Bank of America (ATM)	1245 NW Lovejoy	503.484.1802
Umpqua Bank	1139 NW Lovejoy	503.288.5612
Wells Fargo Bank	926 NW 13th Ave	503.225.3474
US Bank	1040 NW Lovejoy	503.412.3420
West Coast Bank	1207 NW Glisan	503.274.0655
Washington Mutual/Chase	1239 NW Glisan	503.295.7827
Banner Bank	910 NW 10th Ave	503.241.7805
Bank of the West	429 NW Broadway	503.224.7066
Whole Foods (ATM)	1210 NW Couch	503.525.4343
Powell's City of Books ATM	1005 W Burnside	503.228.4651
BOOTH RENTAL		
Peter Corvallis Productions	*only approved supplier	503.222.1664
COFFEE, TEA, SWEETS		
Pearl Bakery	102 NW 9th Ave	503.827.0910
Prasad- Vegan	925 NW Davis	503.224.3993
Blossoming Lotus-Vegan	1713 NE 15 th	503.228.0048
Cupcake Jones	1105 NW 10 th Ave	503.222.4404
Cool Moon Ice Cream	1105 NW Johnson	503.224.2012
Salt & Straw Ice Cream	838 NW 23 rd Ave	971.271.8168
Pop Culture Frozen Yogurt	900 NW Lovejoy #160	503.477.9172
Bridgeport Bakery	1313 NW Marshall	503.241.3612
Peet's Coffee & Tea	1114 NW Couch	971.244.0452
Starbucks	1134 NW Glisan	503.221.7426
The TeaZone	510 NW 11 th	503.221.2130
Boyd Coffee	404 NW 11 th	503.225.2590
Urban Grind	911 NW 14 th Ave	503.546.5919
Ben & Jerry's	7301 NW 10 th Ave	503.796.3033
Sweet Masterpiece	922 NW Davis	503.221.0055
World Foods- show sponsor	830 NW Everett Street	503.802-0755
Whole Foods	1210 NW Couch	503.525.4343

Dog Sitting/ Kennels		
Urban Fauna	939 SW 10 th Ave	503.223.4602
Dog Star	1313 NW Kearney	503.227.0292
Virginia Woof	1520 W. Burnside	503.224.5455
Florists		
City Flowers	824 NW Davis Ave	503.228.4700
Sammy' s	1128 NW Lovejoy	503.281.0310
Old Town Florists	404 NW 10 th	503.223.1646
Orchid Exchange	404 NW 12 th Ave	503.295.6800
Whole Foods	1210 NW Couch	503.228.4651
World Foods	830 NW Everett Street	503.802-0755
Fixtures/ Grid Panels		
Grand & Benedicts	6140 SW Macadam Ave	503.232.1988
Groceries		
World Foods-closest to show	830 NW Everett Street	503.802-0755
Whole Foods	1210 NW Couch	503.228.4651
Safeway	1303 NW Lovejoy	503.205.6746
Hardware/Lumber		
Parr Lumber	1320 NW 19 th Ave	503.223.8141
Pearl Hardware	804 NW Glisan	503.228.5135
Winks WC Hardware	200 SE Stark	503.227.5536
Lowe's	1160 N Hayden Meadows	503.737.3000
Home Depot	1728 N Tomahawk Island	503.289.9200
Hospitals/Medical		
OHSU Emergency	3181 SW Sam Jackson Rd	503.494.7551
Providence Medical	4805 NE Glisan	503.215.6000
Legacy	1015 NW 22 nd Ave	503.413.7711
Zoom+ Care	202 NW 13 th Ave	503.684.8252
Providence Express	1025 NW 14 th Ave	888.227.3312
Signs/Banners		
Fast Signs	1402 NW Glisan	503.221.3917
FedEx	1136 NW Lovejoy	503.219.9641
FedEX	475 NW 23 rd Ave	503.222.4133
Parking	See Pearl District Walking Map for additional locations also Parkopedia.com	
Smart Park	33 NW Davis	503.823.2898
Star Park	NW 14 th /Irving or Flanders	503.275.6437
PMC Parking	34 NW 9 th Ave	503.243.5076
Station Place Smart Park	Lovejoy between Davis/Couch	
Streetcar		
Towards NW	Board @ 10 th /Everett or 10 th /Couch	
Towards Downtown	Board @ 11 th /Davis, 11 th /Glisan/Johnson	



10am - 12pm LOAD-IN :

- 1** N116-N132: Enter from NW Broadway heading West on Flanders. Turn Left (south) on 8th Ave. Unload on NW 8th and then move your vehicle for set up. Exit by turning Left (east) onto Everett.
- 2** N092-N115: Enter from NW Broadway heading West on Flanders. Turn Left (south) onto NW Park. Unload on NW Park and then move your vehicle for set up. Exit by turning Left (east) Everett.
- 3** S042-S062: Enter from NW 9th Ave heading East on Davis, Turn Left (north) onto NW 8th Ave. Park and unload then move your vehicle for set up. Exit by turning Right (east) on Everett.
- 4** S020-S041: Enter from NW9th Ave heading East on Davis. Turn Left (north) onto NW Park. Unload on NW Park and move your vehicle. Exit by turning Right (east) onto Everett.

2pm - 5pm LOAD-IN :

- F** FOOD BOOTHS: Enter from NW 9th Ave and head East on Davis. Unload on NW Davis and then move your vehicle for set up. EXIT RIGHT ON NW 8TH.

2pm - 4pm LOAD-IN :

- 6** S000-S019: Enter from NW9th Ave heading East on Davis. Turn Left (north) onto NW Park. Unload on NW Park and move your vehicle. Exit by turning Right (east) onto Everett.
- 7** N075-N090: Enter from NW Broadway heading West on Flanders. Turn Left (south) onto NW Park. Unload on NW Park and then move your vehicle for set up. Exit by turning Left (east) Everett.
- 8** S063-S074: Enter from NW 9th Ave heading East on Davis, Turn Left (north) onto NW 8th Ave. Park and unload then move your vehicle for set up. Exit by turning Right (east) on Everett.