

2024 FESTIVAL PROGRAM

ART IN THE PEARL

28TH ANNUAL FINE ARTS & CRAFTS FESTIVAL



EXPANSION, CINDY OLMES

LABOR DAY WEEKEND

AUG 31 - SEPT 2 | SAT / SUN 10 - 6 MON 10 - 4

NW Portland / Pearl District / North Park Blocks

ArtInThePearl.com



The annual **Art In The Pearl Fine Arts & Crafts Festival** was created in 1996 by twenty local artists who wanted to present the very finest art and craft available to the City of Portland. Each year, approximately 500 internationally recognized artists compete through a rigorous jury selection process for 130 booth spaces in the North Park Blocks. A spectacular selection of contemporary work is on display, and accomplished artists in every medium are available to greet the public and present to the public. It's a great opportunity to view and acquire fine art and craft of enduring value.

Art In The Pearl is consistently ranked among the top art shows in the United States. An Emerging Artist program encourages the next generation of artists through participation in one of our nation's premier art festivals. Our educational mission is on display in our Artist Demonstration Area, and in our Arts Education "Hands On" Art Pavilion. These activities complete our commitment to the creation of a rich art environment to be shared with our city.



Art In The Pearl is committed to stewardship and reaches out to our community through Art, Education, and Entertainment, and is produced each year by twenty dedicated, working artists who serve on our Board. Art In The Pearl is the only top national art festival produced by artists for artists. We thank you for coming! ■



A SPECIAL THANKS TO OUR 2024
MAJOR FESTIVAL SPONSORS:



THANKS TO OUR **PATRONS OF THE PEARL:**



THANKS TO ALL OF OUR **PARTNERS OF THE PEARL:**

Willamette University / PNCA • Washington County Art Alliance
 Great Harvest Cafe & Bakery • Rain-The Growth Agency
 Sitka Center for Art and Ecology • Klein Personal Injury Law
 Local 14 Art Show • Type Space • Adobe Express • Spielman Bagels
 BLICK Art Materials • Trader Joe's • HKM Employment Attorneys, LLP
 Cascade Women's Health • Georgie's Ceramics & Clay Co.
 Nossa Familia Coffee • Pearl District Neighborhood Association (PDNA)
 Northwest Community Conservancy (NWCC) • Oregon ArtsWatch
 Porch • New Cascadia Traditional

“Our goal is to create a quality venue for exceptional visual and performing artists to share their work and to build an interactive environment between artists and the community.”

-Art In The Pearl Mission

Each year we develop new partnerships and strengthen past relationships as a means to showcase this special festival in a distinctive part of Portland. The contributions by our sponsors ensure that Art In The Pearl continues to be a high quality event in Portland and the Pacific NW. If you're interested in learning more about sponsorship participation options, please contact us:

Art In The Pearl • P.O. Box 5906 • Portland, OR 97228-5906 • 503.512.9071 • artinthepearl@yahoo.com



Booth #S18

Silver Gelatin Photographs



rondobrowski.com

Booth #S06

Booth #N127



ANNIE MEYER GALLERY

2507 SE Clinton St.
Portland, OR 97202

503.957.6800

www.AnnieMeyerGallery.com

Booth #S25

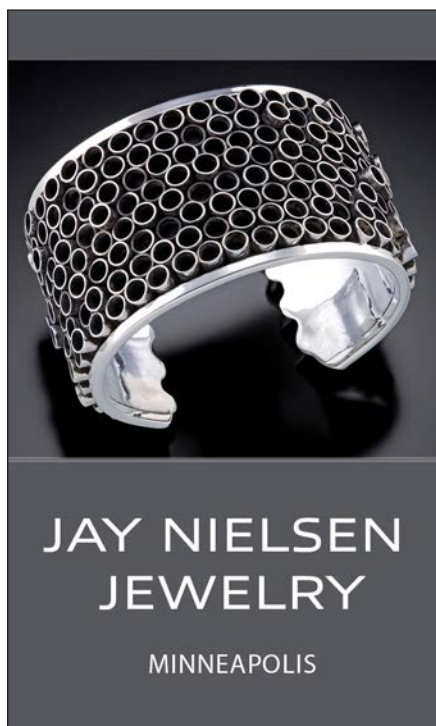
SEAN GODDARD INSECTS



WWW.SEANGODDARDINSECTS.COM



Booth #S37



Booth #S68

Booth #S51



DAVID FRIEDMAN
PAPERCUTTING ARTIST
PET OR PEOPLE PORTRAITS
COMMISSIONS WELCOMED
friedart.com
friedart@gmail.com
@friedart on Instagram
See my work at the
Alberta Street Gallery



 Guild of American
Papercutters



A TRIBUTE TO MEL STILES AND STUBBORN STILES JEWELRY

The Board members of Art In The Pearl cherish the memory and struggle with the loss of Mel Stiles, who died too young of breast cancer at the age of 50 in March this year.

Mel was a legendary independent artist with a huge, devoted clientele. She sold her jewelry at our Festival and craft festivals across the county. Attend any event in this city and witness her signature artwork adorning the ears, wrists, necks and fingers of the people around you. Her work and her personality touched the lives of countless people, many of them acquainted with her and her work through this Festival.

Mel joined our Board in 2010 as one of the 20 fellow volunteer artists who create this Festival. She guided our Board with her shrewd business sense and humor. We treasured her reliable, hardworking, and honest presence.

She leaves behind her husband Dan and two daughters Addie and Odessa. Her family was her proudest creation.

The family requested we honor Mel at the Festival this year by donating to the organization **Metastatic Breast Cancer Awareness, Research and Support/METAvivor.org**. Please visit the website and donate to the cause in her name. Wear her work proudly, write a love note, toast to her legacy, and curse the cancer that took her from all of us. We love and miss you, Mel.



SEE GATE FOLD PIECE
WITH MAP

SEE GATE FOLD PIECE
WITH MAP

ORPHAN GIRL FINE ART

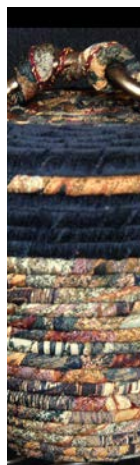
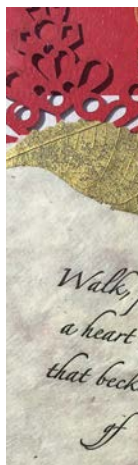


inspired by wildlife - infused with tea

Fine art on upcycled tea bags
learn more at
orphangirlfineart.com



Booth #S72



57th Annual LOCAL 14 Art Show

LIVE at the World Forestry Center in Portland, OR
October 4th, 5th & 6th, 2024

\$5 suggested donation at the door / Wheelchair access

www.Local14.org





Oregon Art Beat

Celebrating arts, artists and community.

Thursdays, 8 p.m., OPB TV
Anytime on the PBS App
opb.org/artbeat



Sitka ART CENTER FOR ART AND ECOLOGY INVITATIONAL

30th ANNIVERSARY

October 18-20, 2024

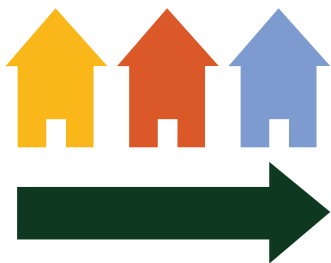
Friday, Saturday and Sunday 11am to 5pm

VENUE: Oregon Contemporary 8371 N. Interstate Ave. Portland, OR



sitkacenter.org

WASHINGTON COUNTY OPEN STUDIOS TOUR



Join us for our FREE annual tour
of 49 artists' studios and galleries
throughout Washington County.

► **October 19 & 20** ◀

10 a.m. to 5 p.m.

washcoart.org



presented by Washington County Art Alliance



Independently owned
Gynecology practice

1040 NW 22nd Ave, Suite 330
Portland, OR 97210

503.274.9936 | Fax 503.274.2660
cascadewh@gmail.com

CascadeWomensHealth.org

M-F, 8am – 4pm

New patients welcome!

SHOP

LOCAL

SUPPORT

KIDS

at



GREY RAVEN GALLERY

in Downtown Beaverton

All proceeds from Grey Raven Gallery support Golden Road Arts, a 501(c)(3) nonprofit dedicated to providing free art education for children.

Find us at
Art in the Pearl
with daily art
projects!

Golden Road
Arts





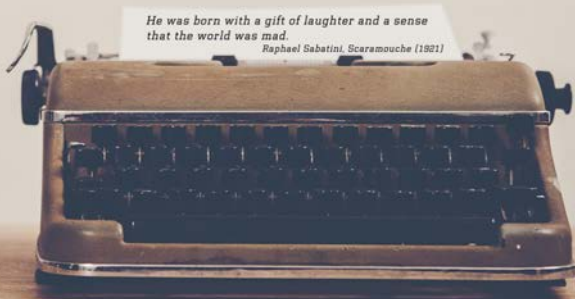
Thurs - Monday
11am - 6pm

Typewriters
Inked Ribbons
Vintage Ads
Literature
Desks & Crates
Ribbon Tins
Metal Spools
Typing Awards

TYPE SPACE

2409 SE 49th Ave
Portland, OR 97206

Community and Event Space
Now Available



Sales - Service - Repair

www.thetype.space ~ 503.888.1925 ~ info@thetype.space



Northwest Community Conservancy

Unifying our Pearl District's Community

Humanitarian Outreach and Protection Services 24/7

Revitalizing our Community Together

www.nwccpdx.org

1TH

PROGRAMMING

TOGETHER

NORTH PARK BLOCKS

ART WALK

CELEBRATION

drop-in activities

Joy

Neighbors

COMMUNITY

WE ARE 1TH

The Center for Contemporary Art & Culture at Pacific Northwest College of Art invites you to the First Thursday Art Walk in the North Park Blocks for:

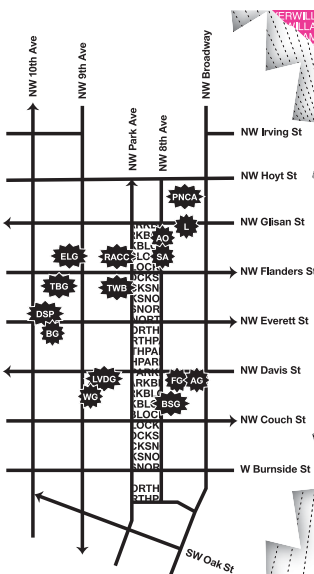
ART CULTURE
EXHIBITIONS
LIVE MUSIC
PERFORMANCES
OPENINGS
REFRESHMENTS

Join us every first Thursday of the month!

1TH
IS
FIRST
THURSDAY!

FIRST
THURSDAY!

- AO** Adams and Ollman
418 NW 8th Ave
- AG** Augen Gallery
716 NW Davis St
- BG** Blackfish Gallery
938 NW Everett St
- BSG** Blue Sky Gallery
122 NW 8th Ave
- DSP** Don't Shoot PDX Annex
927 NW Everett St
- ELG** Elizabeth Leach Gallery
417 NW 9th Ave
- FG** Froelick Gallery
714 NW Davis St
- LANDDD**
714 NW Glisan St
- LVGG** Laura Vincent Design & Gallery
824 NW Davis St
- PNCA** Pacific Northwest College of Art (PNCA)
511 NW Broadway
- RACC** RACC
411 NW Park Ave #101
- SA** Stelo Arts
412 NW 8th Ave
- TBO** The BLACK Gallery
916 NW Flanders St
- TWB** The Writers' Block
333 NW Park Ave
- WG** Waterstone Gallery
124 NW 9th Ave



SEPT 5
OCT 3
NOV 7
DEC 5
5-8PM



CENTER FOR CONTEMPORARY
ART & CULTURE



WILLAMETTE UNIVERSITY | Pacific Northwest College of Art

